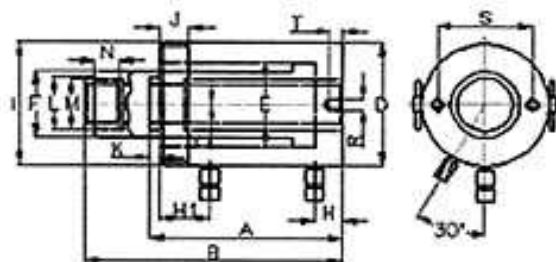


# SINGLE ACTING HOLLOW HYDRAULIC RETURN CYLINDERS



| Capacity Tn. | Stroke mm. | TANGYE    | Capacity (kN) |       | A mm. | B mm. | C mm. | Area cm <sup>2</sup> | Oil Cap. cm <sup>3</sup> | D mm. | E mm. | F mm. | NH1 mm. | I         | J mm. | K mm. | L mm. | M           | N mm. | R       | S mm. | T mm. | Weight Kg. |
|--------------|------------|-----------|---------------|-------|-------|-------|-------|----------------------|--------------------------|-------|-------|-------|---------|-----------|-------|-------|-------|-------------|-------|---------|-------|-------|------------|
|              |            |           | Push          | Pull  |       |       |       |                      |                          |       |       |       |         |           |       |       |       |             |       |         |       |       |            |
| 30           | 150        | LRHR03015 | 301.8         | 172.5 | 300   | 450   | 33.4  | 44                   | 660                      | 120   | 90    | 70    | 26/88   | 4 1/2"-12 | 42    | 4     | 55    | 1 13/16"-16 | 22    | 3/8"-16 | 92.2  | 17    | 22         |
|              | 250        | LRHR03025 | 301.8         | 172.5 | 400   | 650   | 33.4  | 44                   | 1100                     | 120   | 90    | 70    | 26/88   | 4 1/2"-12 | 42    | 4     | 55    | 1 13/16"-16 | 22    | 3/8"-16 | 92.2  | 17    | 28         |
| 60           | 80         | LRHR06008 | 578.1         | 355.7 | 249   | 329   | 54    | 84.2                 | 674                      | 165   | 125   | 95    | 31/66   | 6 1/4"-12 | 48    | 5     | 80    | 2 3/4"-16   | 22    | 1/2"-13 | 130.3 | 14    | 35         |
|              | 150        | LRHR06015 | 578.1         | 355.7 | 319   | 469   | 54    | 84.2                 | 1263                     | 165   | 125   | 95    | 31/66   | 6 1/4"-12 | 48    | 5     | 80    | 2 3/4"-16   | 22    | 1/2"-13 | 130.3 | 14    | 42         |
|              | 250        | LRHR06025 | 578.1         | 355.7 | 419   | 669   | 54    | 84.2                 | 2105                     | 165   | 125   | 95    | 31/66   | 6 1/4"-12 | 48    | 5     | 80    | 2 3/4"-16   | 22    | 1/2"-13 | 130.3 | 14    | 53         |
| 100          | 38         | LRHR10004 | 1018          | 646.8 | 197   | 235   | 80    | 148.5                | 564                      | 220   | 170   | 130   | 37/60   |           |       | 5     | 116   | 4"-16       | 25    | 5/8"-11 | 177.8 | 19    | 48         |
|              | 76         | LRHR10008 | 1018          | 646.8 | 255   | 331   | 80    | 148.5                | 1128                     | 220   | 170   | 130   | 37/80   | 8 3/8"-12 | 60    | 5     | 116   | 4"-16       | 25    | 5/8"-11 | 177.8 | 19    | 60         |
|              | 150        | LRHR10015 | 1018          | 646.8 | 335   | 485   | 80    | 148.5                | 2226                     | 220   | 170   | 130   | 37/80   | 8 3/8"-12 | 60    | 5     | 116   | 4"-16       | 25    | 5/8"-11 | 177.8 | 19    | 76         |
|              | 250        | LRHR10025 | 1018          | 646.8 | 455   | 715   | 80    | 148.5                | 3709                     | 220   | 170   | 130   | 37/80   | 8 3/8"-12 | 60    | 5     | 116   | 4"-16       | 25    | 5/8"-11 | 177.8 | 19    | 102        |
| 150          | 175        | LRHR15018 | 1407          | 566   | 350   | 525   | 80    | 204.8                | 3586                     | 250   | 190   | 160   | 37/60   |           |       | 10    | 135   | 4 1/4"-12   | 40    |         |       |       | 110        |

Hollow Cylinder Hydraulic Return